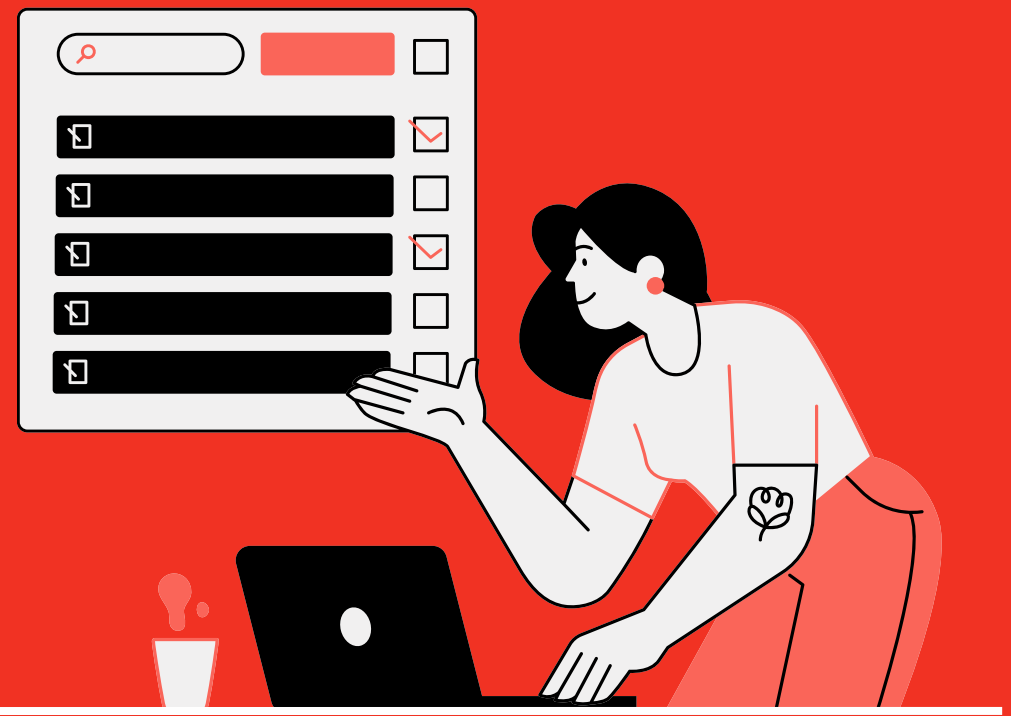
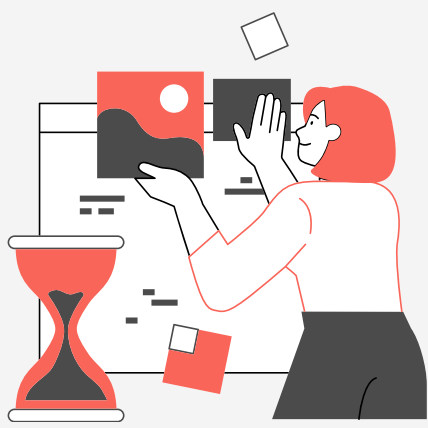


Curriculum Integration: Tools to Teach Differently

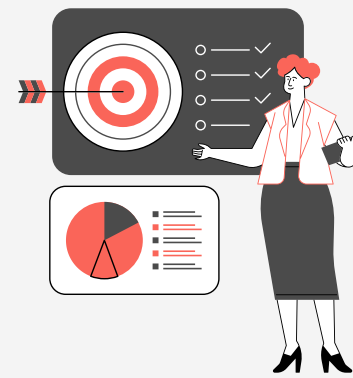


Miles O'Shea



BE DIFFERENT

The same old approach doesn't get us where we need to be. Don't be afraid to break from the norm and be BOLD



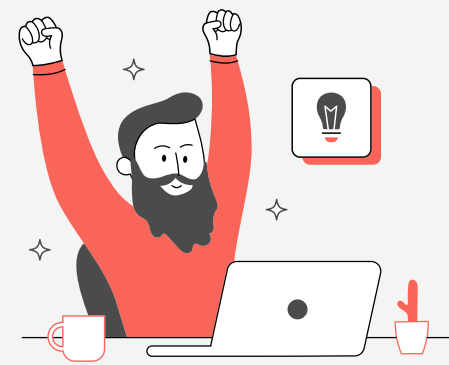
BE BOLD

You are going against 100 years of tradition and forces that are beyond your control. But you can stand out by being bold in your efforts.



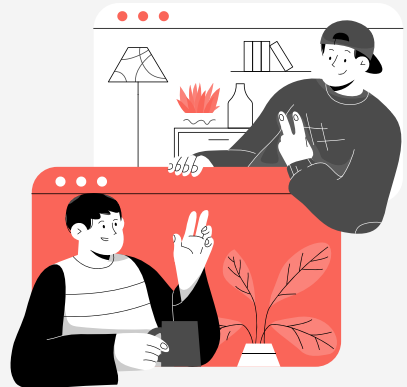
ANSWER THE WHY

Why do we need to know this? Your curriculum must always answer the way. Curriculum integration makes this possible.



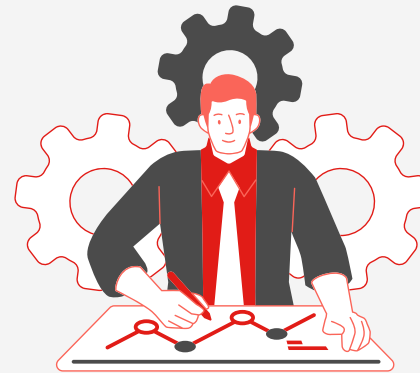
BE BRAVE

Attempting curriculum integration will be hard. Be brave in knowing that what you are doing is best for everyone.



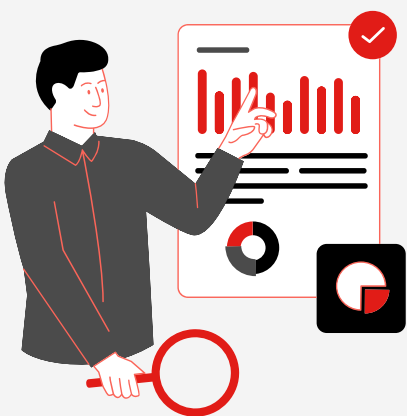
2. START WITH 2 QUESTIONS

What questions do you have about yourself? What questions do you have about the world?



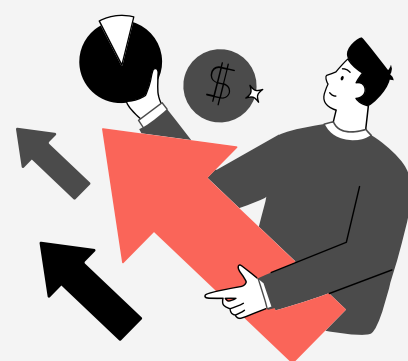
1. DEFINE TIME AND SPACE

Determine where and when you will use the integrated curriculum framework. This time and space will be different for each educator.



4. GENERATE CENTER QUESTIONS

Collaboratively create questions based on the centers that have been identified. The questions will drive exploration.



3. CREATE CENTERS

Common themes will develop from student questions. These themes will become the centers of study.



5. IDENTIFY ACTIVITIES AND PROJECTS

Create activities and projects with students that will allow for the questions to be answered. These projects will become the focus of the center.



6. BE REAL

The result of learning should be real projects that answer the question.